

# iSDG Model

## Integrating data for SDG policy design



*Steve Arquitt  
Millennium Institute  
Washington D.C.*



# T21

INTEGRATED DEVELOPMENT MODEL



# The Millennium Institute: System Dynamics Modeling for Sustainable Development



## Threshold-21 (T-21)

- *Food security and sustainable agriculture*
- *Green economy*
- *MDGs*
- *National Planning*

## Integrated Sustainable Development (iSDG) Goals Model

- *National policy for the SDGs*

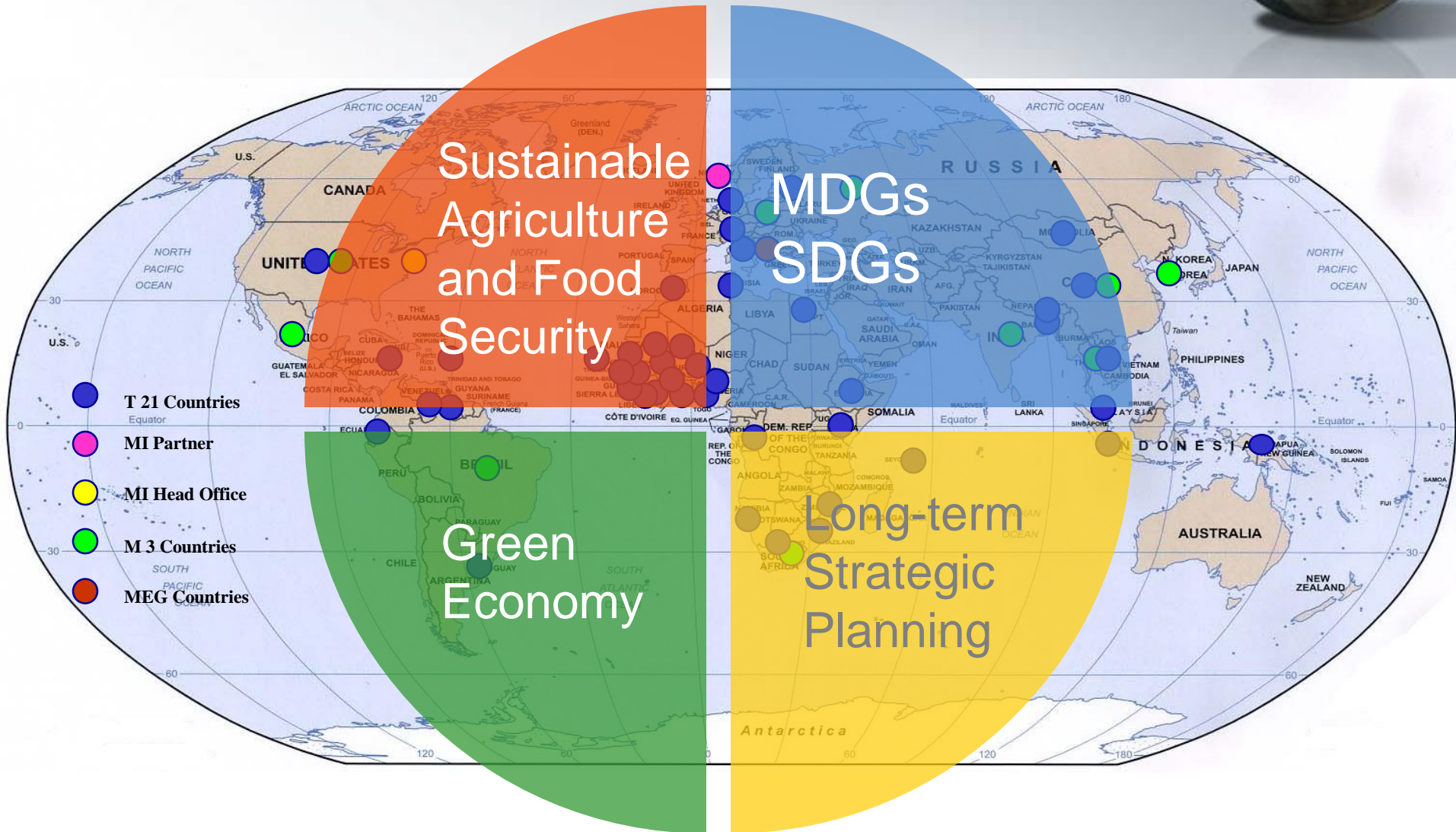


# T21

INTEGRATED DEVELOPMENT MODEL



# T21 Projects World-wide

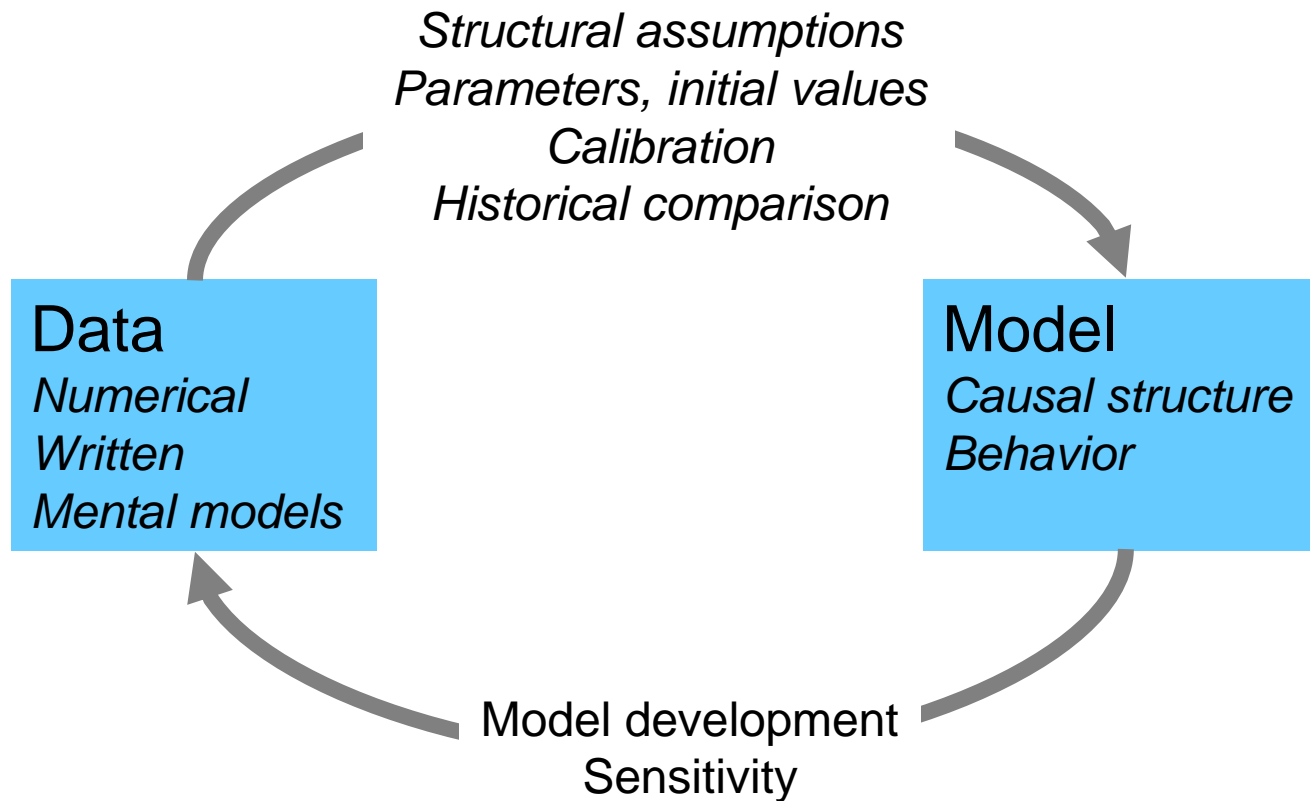


# Data defined



1. The quantities, characters, or symbols on which operations are performed by a computer, which may be stored and transmitted in the form of electrical signals and recorded on magnetic, optical, or mechanical recording media.
2. Things known or assumed as facts, making the basis of reasoning or calculation.

# Data integration: Iterative process



T21

INTEGRATED DEVELOPMENT MODEL







[Home](#)

[Why iSDG](#)

[Integrated Planning](#)

[The Model](#)

[Our Services](#)

[Documentation](#)

# POLICY COHERENCE AND INTEGRATION TO ACHIEVE THE SUSTAINABLE DEVELOPMENT GOALS

[Learn More](#)

[www.isdgs.org](http://www.isdgs.org)